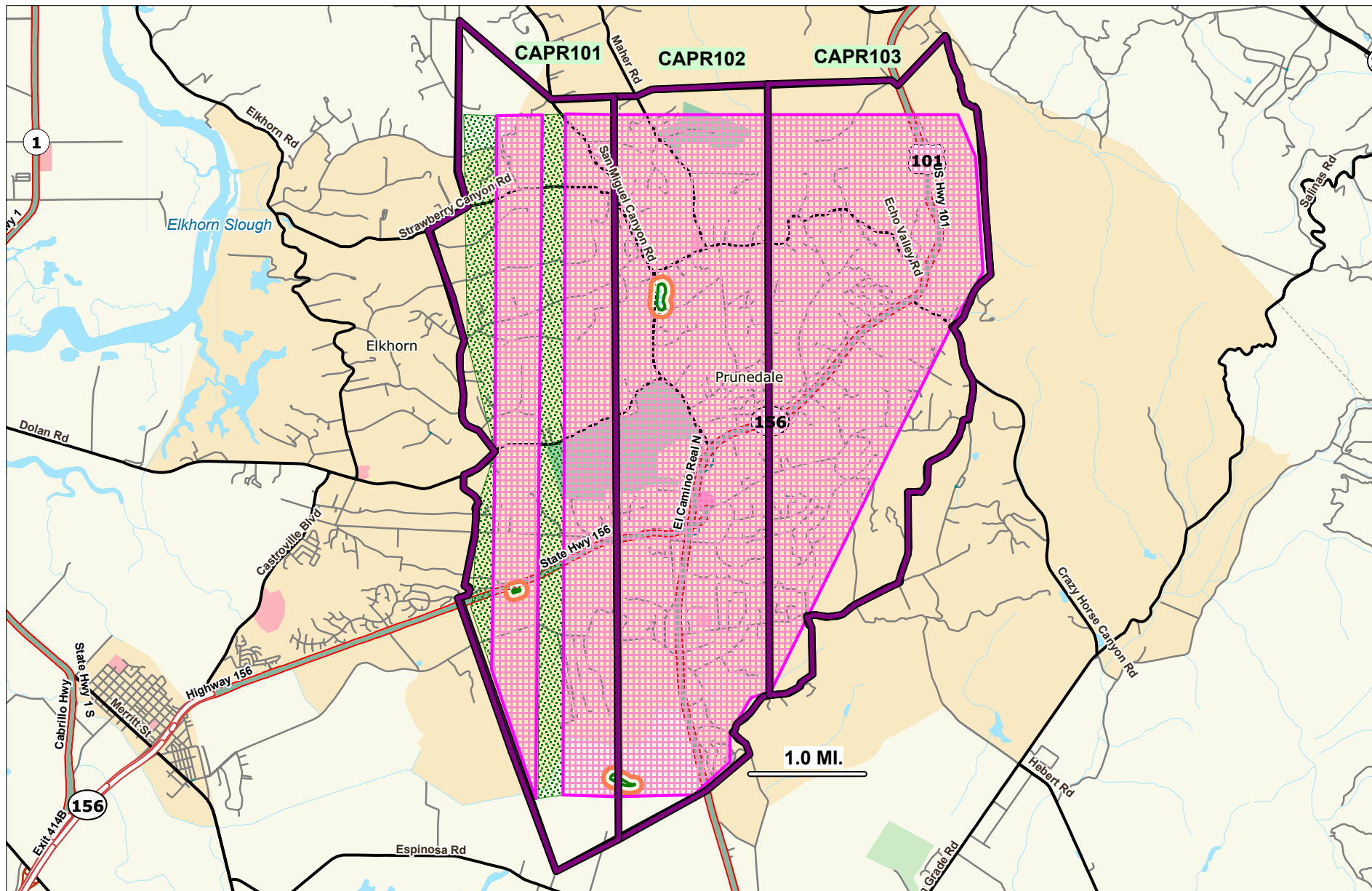


**LIGHT BROWN APPLE MOTH
PRUNEDALE/ROYAL OAKS AREA
MONTEREY COUNTY
2007**



- AERIAL TREATMENT BOUNDARIES**
- FLIGHT CORRIDORS
 - EXCLUSION ZONE
 - TREATMENT 11/11/07
 - TREATMENT 11/09/07